



01452 690553



sales@applebys.estate



www.applebysestateagents.co.uk



## **14 Muzzle Patch, Tibberton, GL2 8EE**

**£329,950**

A stylish and beautifully presented bungalow. You will notice as you walk into the property the open plan light and airy space, ready to move into! \*CHAIN FREE\*

Muzzle Patch in Tibberton is a picturesque residential area located about 5 miles from both Gloucester and Newent. This area is known for its strong community spirit, with amenities such as a village hall, chapel, and primary school. The residents benefit from a communal field for recreational use and often participate in local events.

## Entrance Porch

Lounge/Dining Room 35'7 x 9'11 (10.85m x 3.02m)

Sitting Room 18'8 x 12'1 (5.69m x 3.68m)

Kitchen 9'11 x 9'7 (3.02m x 2.92m)

## Utility

Bedroom 1 12'3 x 11'7 (3.73m x 3.53m)

Bedroom 2 12'11 x 9'3 (3.94m x 2.82m)

Bedroom 3 14'7 x 6'0 (4.45m x 1.83m)

## Bathroom

## OUTSIDE

Double parking space at front of the property leading to the garage

The SOUTH facing garden benefits a large decked area, tiled patio ideal space for entertaining.

Exclusive to residents of the street a two acres of maintained land surrounding protected Oak trees. Views to the Malvern hills. ( There is a maintenance charge of £200 PA for use of the residents communal field and upkeep of the surrounding area.)

## Services

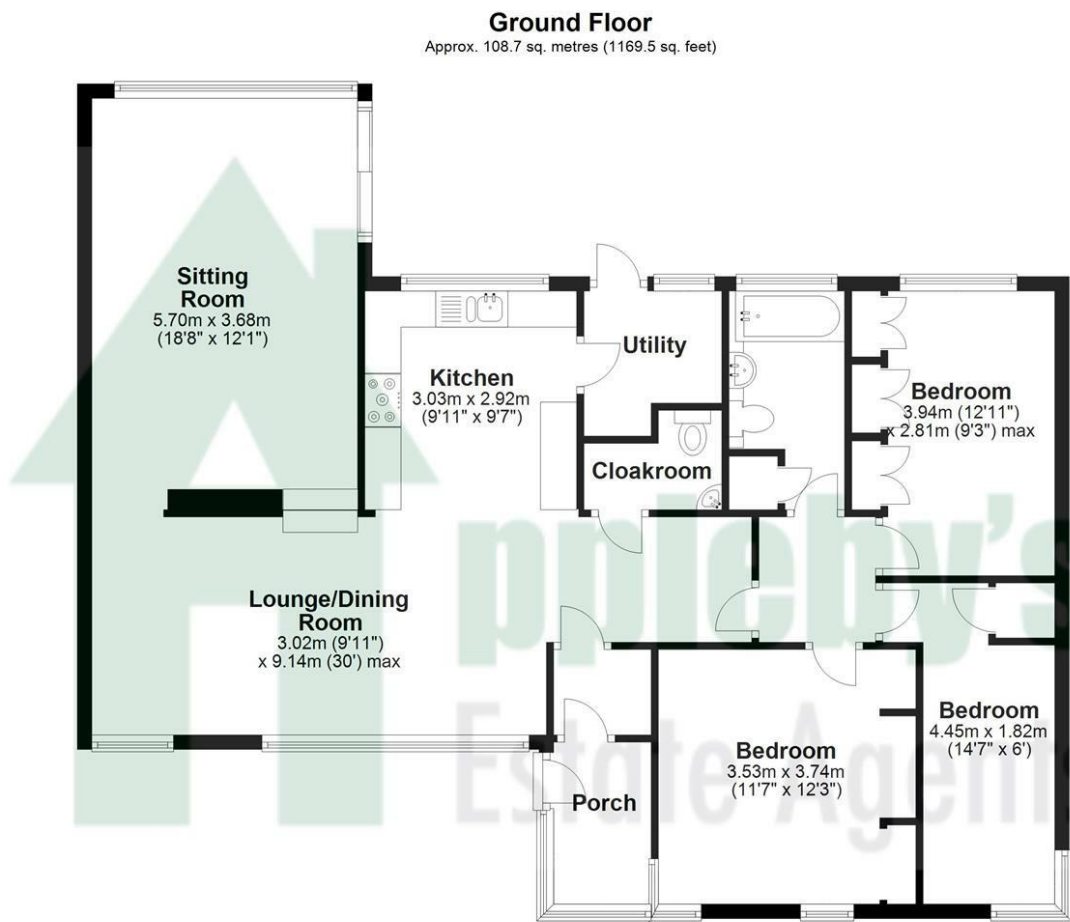
Mains drainage, oil

Forest of Dean district council tax band D

## Tenure

Freehold

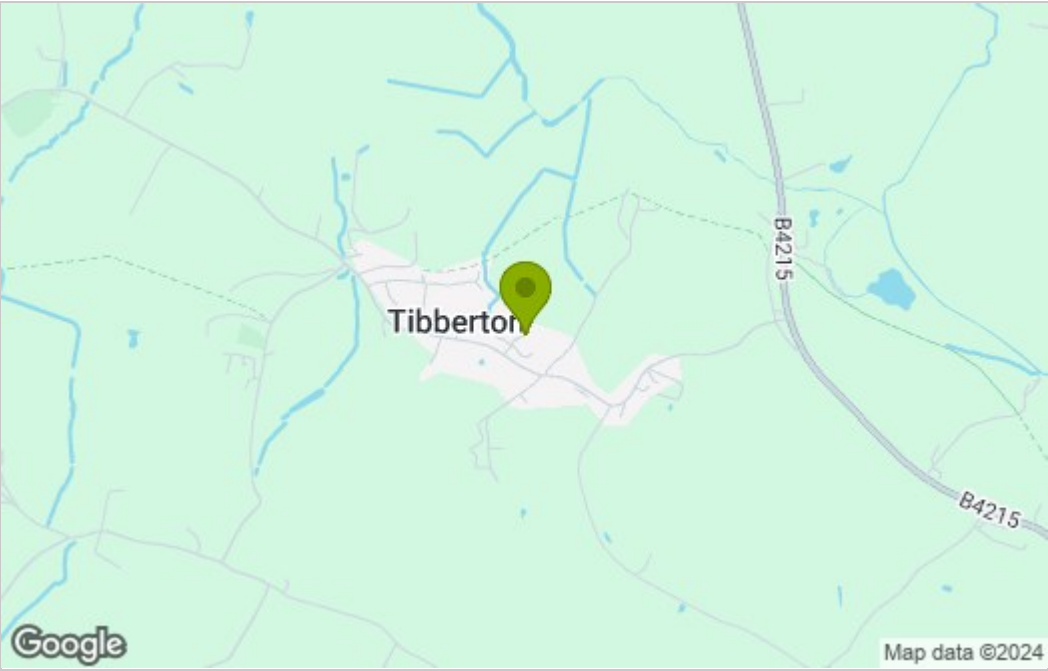
Floor Plan



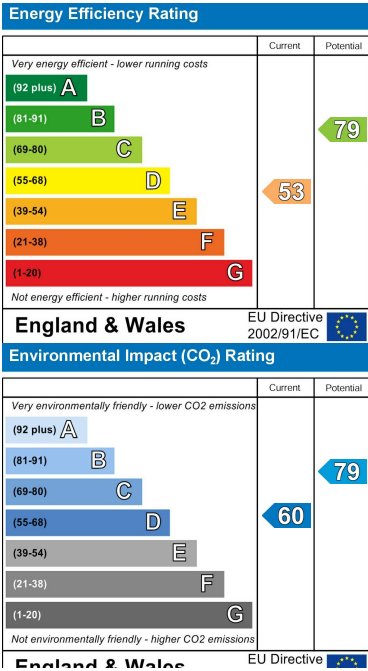
Total area: approx. 108.7 sq. metres (1169.5 sq. feet)

Please note this floor plan is for marketing purposes and is to be used as a guide only. All efforts have been made to ensure its accuracy.  
Plan produced using PlanUp.

Area Map



Energy Efficiency Graph



These particulars, whilst believed to be accurate are set out as a general outline only for guidance and do not constitute any part of an offer or contract. Intending purchasers should not rely on them as statements of representation of fact, but must satisfy themselves by inspection or otherwise as to their accuracy. No person in this firms employment has the authority to make or give any representation or warranty in respect of the property.